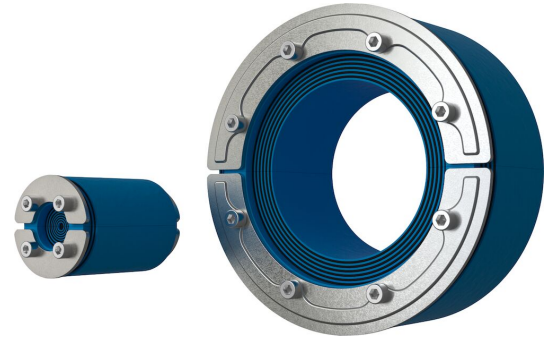




Roxtec RS OMD seal

Transit with adaptable outside to fit non-standard sleeve sizes.

The Roxtec RS OMD is a seal for single cables or pipes in metal sleeves. The entry seal has two halves with removable layers making it adaptable to cables and pipes of different sizes. The transit has layers also on the outside to be adaptable to non-standard sleeve sizes and openings. The design of the transit makes it easy to install around existing cables or pipes.



- Rodent resistant
- Perfect for retrofit
- Quick and easy to install

Product characteristics



Fire rated



Watertight



Gas-tight

Structure of installation



Metal



Concrete

Mounting type



Existing hole



Existing sleeve

Ratings & certificates

Fire

- A-CLASS according to IMO 2010 FTP Code
- E/EI rating according to EN 13501

Tightness

- Gas: 2.67 bar (catastrophic)
- Water: 4 bar (catastrophic)

Sealing components

Sealing components



Lubricant



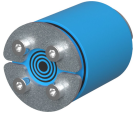
RS OMD seals

For detailed information, please visit [roxtec.com](https://www.roxtec.com).

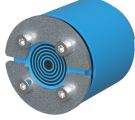


Pre-configured transit kits

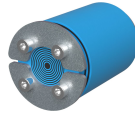
mm/kg



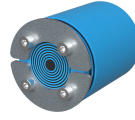
RS 25 OMD AISI316



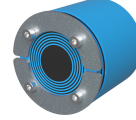
RS 31 OMD AISI316



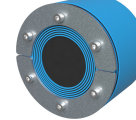
RS 43 OMD AISI316



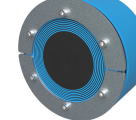
RS 50 OMD AISI316



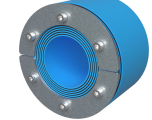
RS 68 OMD AISI316



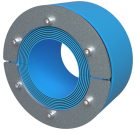
RS 100 OMD AISI316



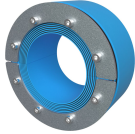
RS 125 OMD AISI316



RS 100 OMD AISI316
WOC



RS 125 OMD AISI316
WOC



RS 150 OMD AISI316
WOC

Product	Configuration	Aperture dimensions Ø	Weight	Art. no
RS 25 OMD AISI316	1x (3.6-12.0)	26 - 30	0.08	RSO0100251021
RS 31 OMD AISI316	1x (4.0-17.0)	32 - 35.5	0.09	RSO0100311021
RS 43 OMD AISI316	1x (4.0-23.0)	44 - 51	0.32	RSO0100431021
RS 50 OMD AISI316	1x (8.0-30.0)	51 - 58	0.41	RSO0100501021
RS 68 OMD AISI316	1x (26.0-48.0)	69 - 76.5	0.6	RSO0100681021
RS 100 OMD AISI316	1x (48.0-70.0)	101 - 108	1.2	RSO0101001021
RS 125 OMD AISI316	1x (66.0-98.0)	126 - 143	2	RSO0101251021
RS 100 OMD AISI316 WOC	1x (48.0-70.0)	100 - 109	1	RSO0001001021
RS 125 OMD AISI316 WOC	1x (66.0-98.0)	125 - 144	1.6	RSO0001251021
RS 150 OMD AISI316 WOC	1x (93.0-119.0)	150 - 168	2	RSO0001501021

The product information provided by Roxtec does not release the purchaser of the Roxtec system, or part thereof, from the obligation to independently determine the suitability of the products for the intended process, installation and/or use. Roxtec gives no guarantee for the Roxtec system or any part thereof and assumes no liability for any loss or damage whatsoever, whether direct, indirect, consequential, loss of profit or otherwise, occurred or caused by the Roxtec systems or installations containing components not manufactured by an authorized manufacturer and/or occurred or caused by the use of the Roxtec system in a manner or for an application other than for which the Roxtec system was designed or intended. Roxtec expressly excludes any implied warranties of merchantability and fitness for a particular purpose and all other express or implied representations and warranties provided by statute or common law. User determines suitability of the Roxtec system for intended use and assumes all risk and liability in connection therewith. In no event shall Roxtec be liable for indirect, consequential, punitive, special, exemplary or incidental damages or losses. The Roxtec products are offered and sold in accordance with the conditions of the Roxtec General Terms of Sales. The latest version of the Roxtec General Terms of Sales can be downloaded from <https://www.roxtec.com/en/about-us/about-roxtec/general-terms-of-sales/>. We reserve the right to make changes to the product and technical information without further notice. Any errors in print or entry are no claims for indemnity. The content of this publication is the property of Roxtec International AB and is protected by copyright. This document was generated on: 2024-09-27